



Bosman Drive, Windlesham

£579,950



Bosman Drive, Windlesham

A spacious three bedroom, two bathroom house with scope to extend subject to planning permission on the popular Snows Ride development in Windlesham. No onward chain.

FEATURES

- End terrace, corner plot
- No onward chain
- Quiet cul-de-sac
- Gas central heating
- Built in wardrobes to master bedroom
- Close to Woodcote and Hall Grove schools

ACCOMMODATION

- Entrance hall
- Lounge/diner
- Downstairs cloakroom
- Kitchen/breakfast room
- Conservatory
- Three bedrooms
- Two bath/shower rooms

OUTSIDE

- Front and rear gardens
- Driveway parking for 2 cars
- Garage with front and rear garage doors

COUNCIL TAX

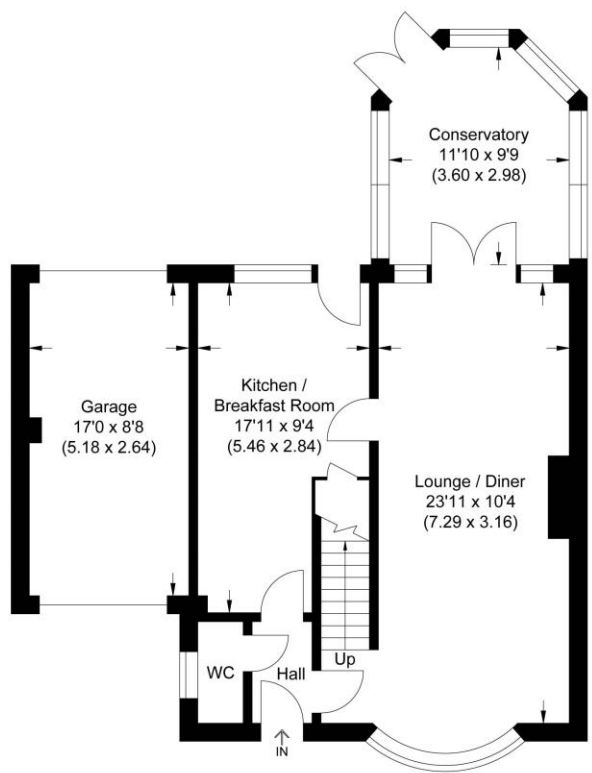
Surrey Heath – Band E

EPC RATING

D

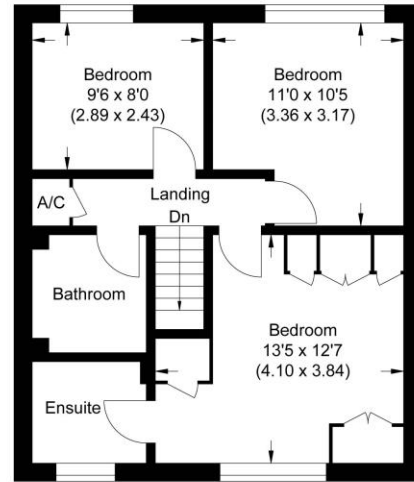






Ground Floor

Approximate Gross Internal Area
114.0 sq m / 1227.08 sq ft
(Includes Garage)
Garage Area 13.68 sq m / 147.25 sq ft

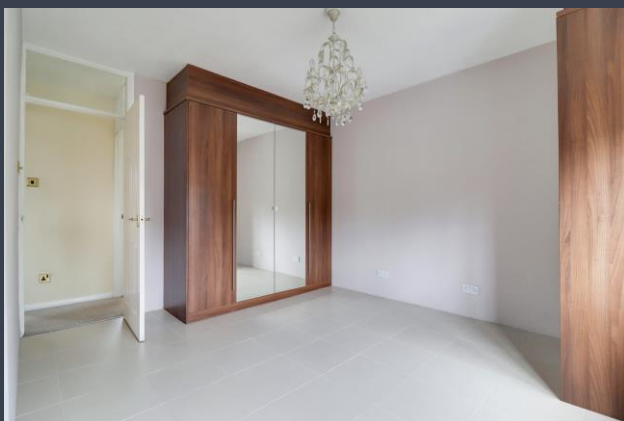


First Floor

Illustration for identification purposes only, measurements are approximate, not to scale.

Disclaimer: We wish to inform prospective purchasers that we have prepared these sales particulars as a general guide. We have not carried out a detailed survey, nor tested the services, appliances and specific fittings. Room sizes are approximate and rounded; they are taken between internal wall surfaces and therefore include cupboards / shelves, etc. Accordingly, they should not be relied upon for carpeting, curtains / blinds and kitchen equipment, whether fitted or not, are deemed removable by the vendor unless specifically itemized within these.

Postcode for sat nav: **GU20 6JN**



NEWTON ROWE
SALES & LETTINGS

The Old Dairy, 7 Updown Hill, Windlesham, Surrey GU20 6AF
enquiries@newtonrowe.co.uk | 01276 986900